

# SURGICAL GOWN

PN: 060401(s) / MANUFACTURER PN: CN430021

Disposable Standard Surgical Gown with round collar, opening at back with ties on the neck, adjustable with lace at waist, knitted cuffs.

CE MDD 93/42/  
EEC

SGS



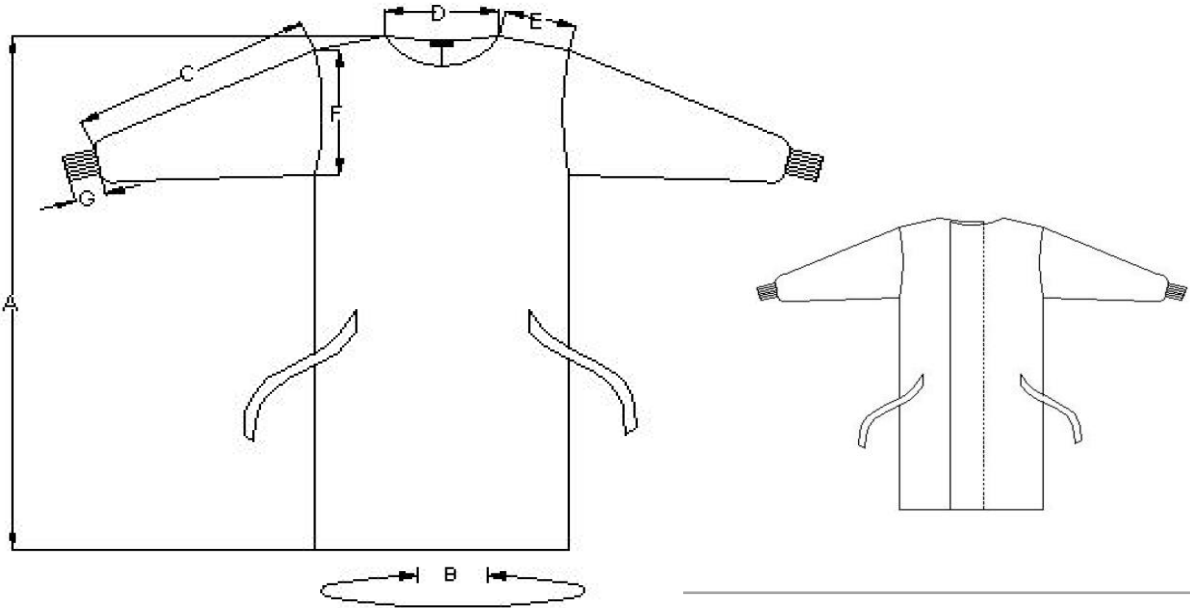
Our SMS technology utilizes several layers of fabric to provide a very high level of repellency. The fabric features several tightly packed meltblown layers sandwiched between strong spunbond outer layers. An advanced barrier to body fluids and microbes.

- EN13795 conformity
- Long sleeves, knitted cuffs
- Velcro on neck back and ties on waist
- With paper card on back
- With or without reinforced on sleeves and front part
- Preventing and isolating dust, particle and virus invading
- Providing reliable barriers to water stem or blood and other fluid
- Important to minimize cross-infection during surgery
- EO sterile or NON sterile

# SURGICAL GOWN

PN: 060401(s) / MANUFACTURER PN: CN430021

SMMS Surgical Gown, neck with velcro, waist with belt, knitted cuffs, EO sterile option



**Spec:**

Material	SMS, 35 gsm
----------	-------------

Size		M	L	XL	XXL
Length	A	120	130	140	150
Width	B	145	150	160	170
Sleeve Length	C	55	60	65	65
Neckhole Width	D	24	24	24	24
Shoulder Width	E	20	20	21	22
Armhole Width	F	29	29	29	29
Cuff Width	G	5	5	5	5

Unit: cm

Tolerance: ±2cm

**Packaging**

Non-Sterile	Plastic bag	10 PCS
	Carton	60PCS, 6 bags, 50cm x 35cm x 50cm
Sterile	Plastic bag	1 PCS
	Carton	50PCS, 50 bags, 50cm x 35cm x 50cm